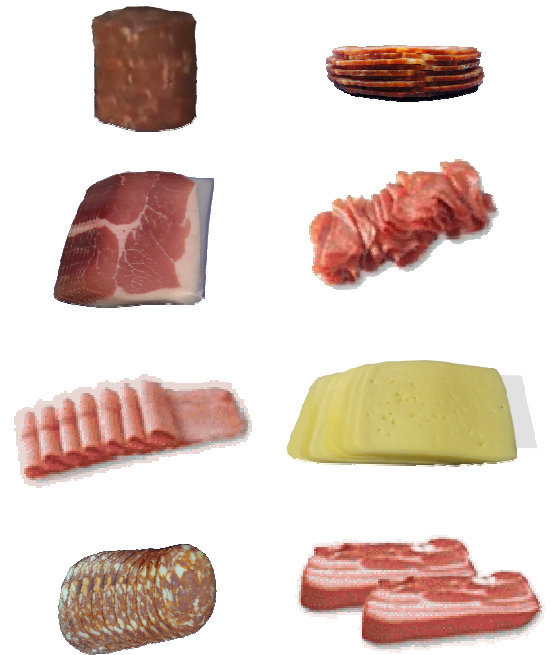


**GENERAL CHARACTERISTIQUES:**

- Heavy duty construction made of AISI-304 stainless steel.
- Machine made according to the European Directive 2006/42/CE.
- The CASTELLVALL slicer is ideal for cutting and stacking cured, cooked and raw meats as well as cheese and vegetables
- 150 mm output conveyor and 500mm length separator conveyor with automatic 70mm vertical tiling.
- The product to be cut is attached to a gripper carriage with automatic handling, pneumatic.
- Vertical and lateral pneumatic pusher-plates with pressure adjustable from the control panel.
- Product presentation: stepped, stacked, stepped-stack, individual slices, "shaved-meat", oval shapes, one row beside another, different programmable figures, etc. The number of slices in each group may be varied according to requirements, as well as the length of the portions and the separation between portions.
- Cutting system, both circular and orbital rotation, with independent motors and independent speed control through the control panel. The cutting settings are managed throughout touch screen.
- Easy adjustment of all settings using the touch sensitive screen of 10".
- Continuous portion evaluation and complete.



## OPTIONS:

- Interleaver paper maximum 220 mm. Alternatively, 3 papers of 90 mm/each in parallel. Ref. **ITE0615015C**  
Dynamic weighing scale. Weighing table length 450 mm. Width weighing table 400 mm. Speed weighing 80-100 servings / minute. Maximum weight portion 1000gr. Ref. **ITE0600003C**.
- 500mm tipping discriminator conveyor-belt for rejecting the portion on upper conveyor-belt. Ref. **ITE0600009C**.
- 2000 mm long upper conveyor-belt for checking rejected pieces. Ref. **ITE0600006C**.
- Side discriminator conveyor-belt. Width: 400 mm and length: 600mm. Side rejection in the same lower conveyor-belt. Ref. **ITE0615016C**
- Output conveyor for thermoforming machine. Width=500 length 3000 mm. Ref. **ITE0600005C**
- Fold device of slices. Ref. **ITE0600010C**

## TECHNICAL DATA:

Settings	Width,mm	High,mm	Length,mm
Blade Ø420, mm	290	160	800
Blade Ø450, mm	355		
Slice thickness, mm	from 0,5 to 100		
Production, slices/min	400		
Power	from 6kW to 11kW		
Air pressure	6 bar		
Weight	From 600 to 1300 Kg		
Dimensions (depends on its configuration)	5071-5729 x 1146 x 1928		

